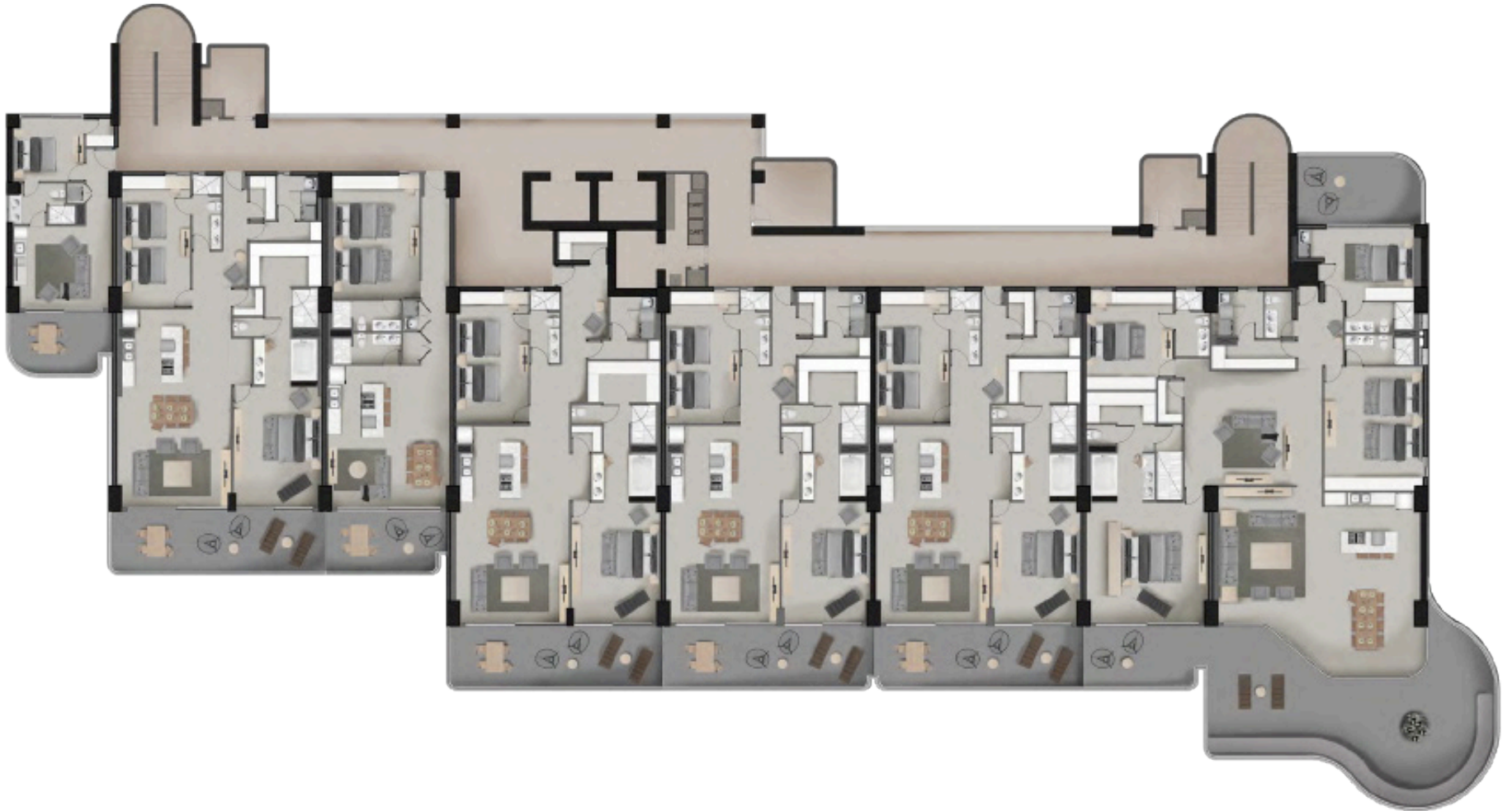


Antigua Building

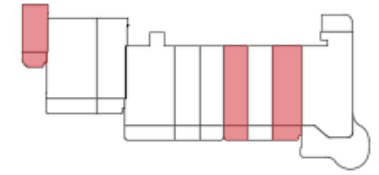
LAS PALOMAS PHASE 3, PUERTO PEÑASCO, SONORA

FLOOR PLAN OVERVIEW



One Bedroom Floor Plans

LAS PALOMAS PHASE 3, PUERTO PEÑASCO, SONORA



Studio

532 Sq Ft

This floor plan is exclusive to the Antigua Building. It includes a bedroom, laundry area, bathroom, closet, living room and kitchen.



Floor Plan 1A

1075 Sq Ft

One Bedroom floor plan, designed to accommodate two queen size beds. It includes a closet, desk, two bathrooms, laundry area, kitchen, living room, dining room and private terrace



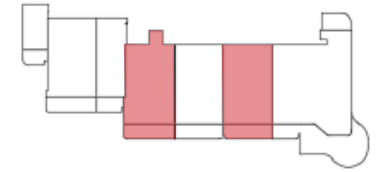
Floor Plan 1B

876 Sq Ft

One Bedroom floor plan, designed to accommodate two queen size beds. It includes a closet, desk, two bathrooms, laundry area, kitchen, living room and private terrace.

Two Bedroom Floor Plans

LAS PALOMAS PHASE 3, PUERTO PEÑASCO, SONORA



Floor Plan 2A

1855 Sq Ft

Two Bedroom floor plan, with one bedroom designed to accommodate two queen size beds. It includes two bathrooms, laundry area, 5 closets, living room, dining room, kitchen and private terrace.



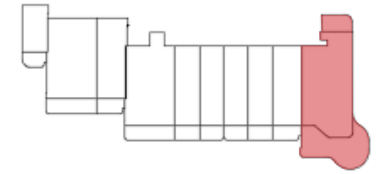
Floor Plan 2B

1752 Sq Ft

Two Bedroom floor plan, with one bedroom designed to accommodate two queen size beds. It includes two bathrooms, laundry area, 5 closets, living room, dining room, kitchen and private terrace.

Three Bedroom Floor Plan

LAS PALOMAS PHASE 3, PUERTO PEÑASCO, SONORA



Floor Plan 3D

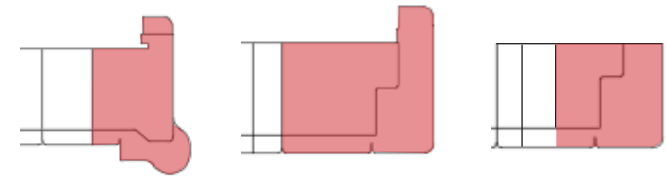
2158 Sq Ft

Three Bedroom floor plan, designed with one bedroom as a lock-off suite, with bar, closet, private bathroom and private terrace; two more bedrooms, two bathrooms, 4 closets, laundry area, linen closet, living room, dining room, kitchen and terrace.



Penthouse Floor Plans

LAS PALOMAS PHASE 3, PUERTO PEÑASCO, SONOR



PH3 Floor Plan

3222 Sq Ft

Four Bedroom floor plan, designed with one bedroom as a lock-off suite, with bar, closet, private bathroom and private terrace; three additional bedrooms, three full bathrooms, a guest bathroom, laundry area, five closets, two living rooms, kitchen, dining room and private terrace



PH4 Floor Plan

3196 Sq Ft

Four Bedroom floor plan, designed with one bedroom as a lock-off suite, with bar, closet, private bathroom and private terrace; three bathrooms, a guest bathroom, laundry area, five closets, two living rooms, kitchen, dining room and private terrace with bar and jacuzzi.



PH 5 Floor Plan

3131 Sq Ft

Two Bedroom floor plan, with one bedroom designed to accommodate two queen size beds. It includes two full bathrooms, laundry area, 5 closets, living room, kitchen and private terrace with bar and jacuzzi.