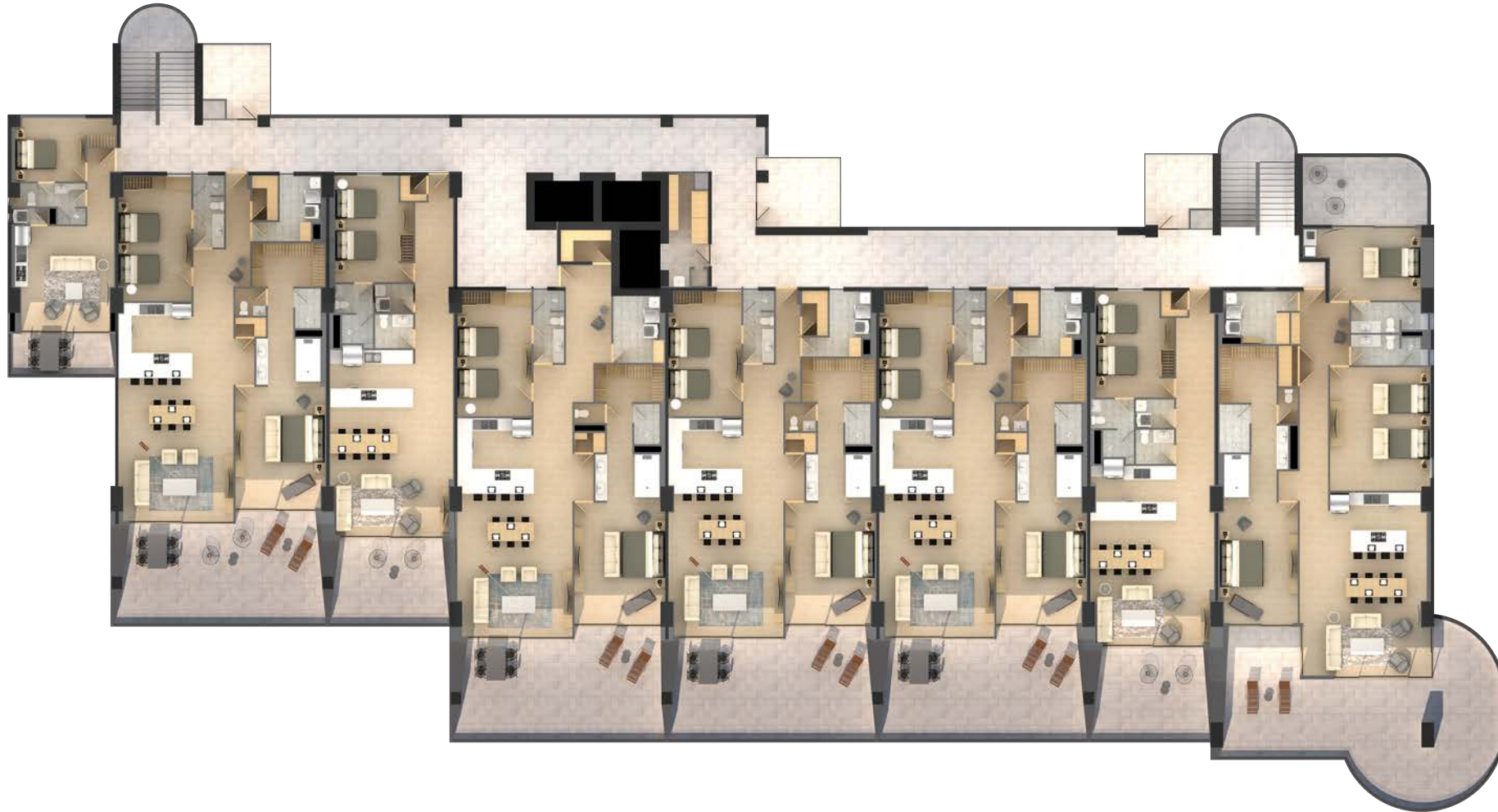
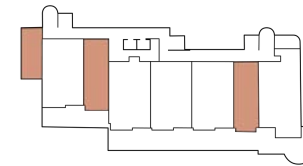


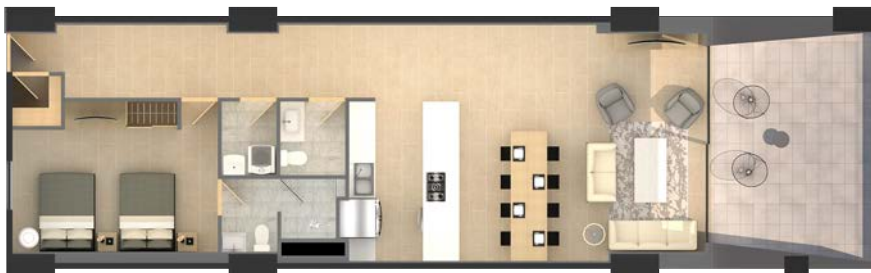
FLOOR PLAN OVERVIEW



ANTIGUA - LAS PALOMAS PHASE 3, PUERTO PEÑASCO, SONORA



ONE BEDROOM FLOOR PLANS



FLOOR PLAN 1A

1075 ft² | 100 m²

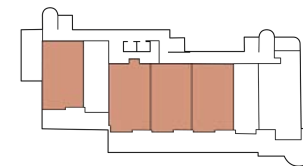
One bedroom floor plan, designed to accommodate two queen size beds. It includes a closet, desk, two bathrooms, laundry area, kitchen, living room, dining room & private terrace



STUDIO

532 ft² | 50 m²

This floor plan is exclusive to the Antigua Building. It includes a bedroom, laundry area, bathroom, closet, living room & kitchen.



TWO BEDROOM FLOOR PLANS



FLOOR PLAN 2A

1855 ft² | 172 m²

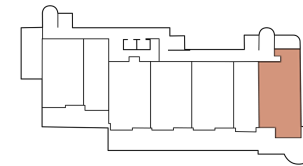
Two-bedroom floor plan, with one bedroom designed to accommodate two queen size beds. It includes two bathrooms, laundry area, 5 closets, living room, dining room, kitchen and private terrace.



FLOOR PLAN 2B

1752 ft² | 163 m²

Two-bedroom floor plan, with one bedroom designed to accommodate two queen size beds. It includes two bathrooms, laundry area, 5 closets, living room, dining room, kitchen and private terrace.



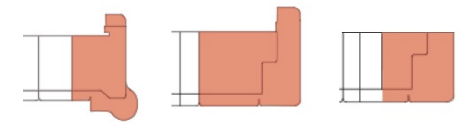
THREE BEDROOM FLOOR PLAN



FLOOR PLAN 3D

2158 ft² | 200 m²

Three-bedroom floor plan, designed with one bedroom as a lock-off suite, with bar, closet, private bathroom and private terrace; two more bedrooms, two bathrooms, 4 closets, laundry area, linen closet, living room, dining room, kitchen and terrace.



PENTHOUSE FLOOR PLANS



PH3 FLOOR PLAN

3222 ft² | **299.33** m²

Four-bedroom floor plan, designed with one bedroom as a lock-off suite, with bar, closet, private bathroom and private terrace; three additional bedrooms, three full bathrooms, a guest bathroom, laundry area, five closets, two living rooms, kitchen, dining room and private terrace



PH4 FLOOR PLAN

3196 ft² | **296** m²

Four-bedroom floor plan with bar, closet, private bathroom and private terrace; three bathrooms, a guest bathroom, laundry area, five closets, two living rooms, kitchen, dining room and private terrace with bar and jacuzzi.



PH5 FLOOR PLAN

3131 ft² | **290.88** m²

Two-bedroom floor plan, with one bedroom designed to accommodate two queen size beds. It includes two full bathrooms, laundry area, 5 closets, living room, kitchen and private terrace with bar and jacuzzi.